

# Filter Paper Lead Samples

## Acceptable Samples

Front



Back

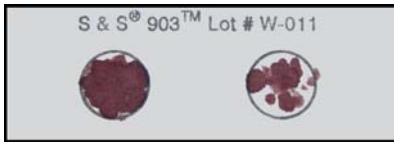


**Optimal Sample:** Free falling drops of blood will produce spots that soak through uniformly to back side of paper. Two spots provide adequate sample for complete analysis.

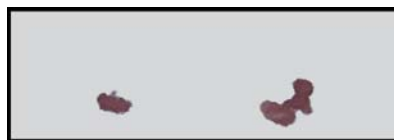
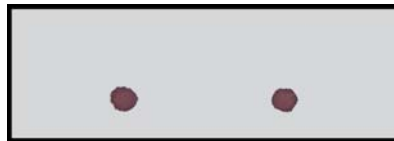
**Sampled Card:** This card has been sampled for analysis. Two punches are taken for initial analysis; up to six punches may be necessary to report a final result for samples initially  $\geq 10$  ug/dl. Areas that are sampled must have soaked through to back side of filter paper.

## Unacceptable Samples

Front



Back



**Insufficient Specimen Collected:** Blood drop not allowed to accumulate to adequate size to fall freely. Blood drop was touched to filter paper.

**Overly Saturated or Wet Filter Paper:** Sample does not dry and cannot be punched.

**Blood Smeared on Filter Paper:** Finger surface touched to filter paper; blood spot does not soak through to back side.

**Non-Homogenous Sample:** Spots are not uniform in appearance; possible contamination with hand soap, lotion, or latex powder or sample collected after blood has begun to clot.

**Transferred Sample:** Capillary tube or other device was used to transfer sample; spots do not soak through to back side of filter paper.

**Filter Paper Disrupted:** Capillary tube or other device was used to transfer sample; front of card has been scratched or disrupted.